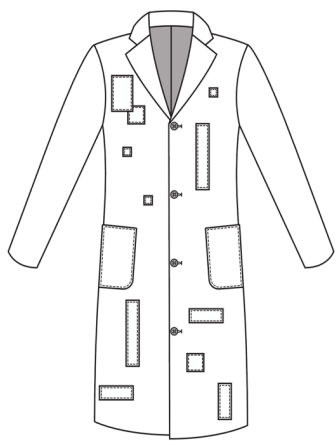
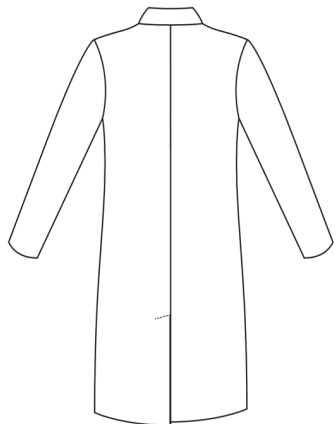


Men's JACKET Spec Sheet

NAME: Men's Off White Patches Jacket		DATE: 5-May-20		
SEASON: Fall / Winter	STYLE #: 003w2020	SIZE: Medium		
DESCRIPTION: Wool Tailored overcoat, Notched collar, Four-button closure, Vent at the back, Coat is lined, 2 Patch pockets at front				
FABRICATION: Wool Twill				
TRIM(s): Black 4-Hole Plastic Button x4			TRIM: 25mm	
	FRONT	BACK	TOTAL	FLATS / COMMENTS
1 NECK DROP	17 3/4 in	1/8 in		 Front
2 NECK – WIDTH	5 3/4 in			
3 SHOULDER – LENGTH	6 1/2 in			
4 ACROSS SHOULDER	19 in			
5 ACROSS BACK		18 in		
6 LENGTH *				
a. From HPS	43 1/4 in	44 in		
b. @ CF/CB	26 in	43 in		
c. Side	31 1/4 in			
7 HPS TO UNDERARM	12 1/4 in	12 3/4 in		
8 ACROSS CHEST	20 3/4 in	21 in	41 3/4 in	
9 HPS TO WAIST	21 in	22 1/4 in		
10 HALF WAIST			18 3/4 in	
11 BOTTOM EDGE OPENING (sweep)			46 in	
12 ARMHOLE CIRCUMFERENCE	11 1/2 in	11 3/4 in	23 1/4 in	
13 PRINCESS SEAM PLACEMENT				
a. From HPS	11 in	10 in		
b. From CF/CB @ armhole (or shoulder seam)	9 3/4 in	8 3/4 in		
c. From CF/CB @ waist	10 1/8 in	11 3/4 in		
d. From CF/CB @ sweep	8 3/4 in	8 in		
14 SIDE PANEL WIDTH				
a. Armhole			5 3/8 in	
b. Waist			4 1/2 in	
c. Sweep			5 in	
15 COLLAR WIDTH		13 7/8 in		
a. @ CENTER BACK		3 3/4 in		
b @ POINT	2 3/4 in			
16 LAPEL WIDTH @ POINT	2 3/4 in			
17 SLEEVE – LENGTH *				
a. Overarm	26 in			
b. Underarm	18 in			
c. CB		36 1/4 in		
d. HPS	32 in			
18 UPPER SLEEVE WIDTH	8 in			
19 ELBOW	7 1/2 in			
20 SLEEVE PANEL FOR TWO PIECE SLEEVE	5 1/4 in	6 3/4 in	7 in	
21 DEPTH OF SLEEVE HEM	1 1/2 in			
22 POCKET A				
23 a. Placement – Distance from HPS	20 in			
24 b. Placement – Distance From CF	2 in			
c. Pocket width	6 in			
d. Pocket length	8 5/8 in			
POCKET B				
a. Placement – Distance from HPS	20 in			
25 b. Placement – Distance From CF	2 in			
c. Pocket width	6 in			
d. Pocket length	8 5/8 in			
26 BINDING – WIDTH/HEM	2 1/4 in	1 5/8 in		
27 BUTTON PLACEMENT	16 3/4 in	4 1/2 in		


Back

Fabric ID #:	930024	Season:	Fall/Winter
Description:	Wool Twill	Cost:	32.99/yd
Fabric Width:	60 in	Yardage:	2 1/2 yd
Color:	Off White		



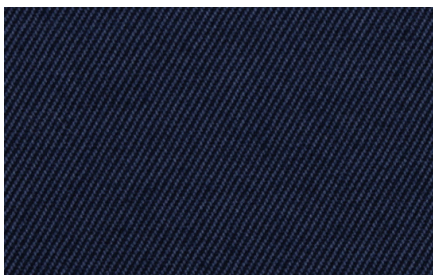
Fabric ID #:	931TD		
Fiber Content	100% Polyester		
Description	Utility Fabric		
Fabric Width	20 in		
Color	White		
Cost	4.99/yd		
Yardage	1 yd		

Rag & Bone Cornstalk Wool Twill

A close-up photograph of a brown fabric with a twill weave pattern. The fabric is folded, creating diagonal ridges and valleys that emphasize the texture. The color is a warm, medium brown.

Fabric ID #:	1849801		
Fiber Content	100% Cotton		
Description	Drapery Linings		
Fabric Width	54 in		
Color	White		
Cost	7.99/yd		
Yardage	1.5 yd		

Sturdy Outer Space Twill Wool Jacketing

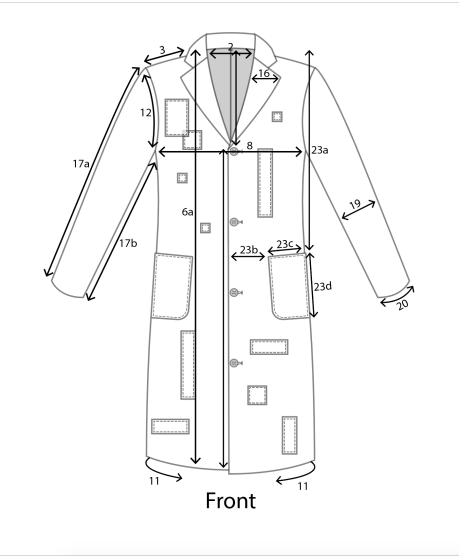
A close-up image of a dark blue, textured fabric, likely wool, showing a diagonal twill weave pattern. The fabric has a fine, consistent texture with a slight sheen, characteristic of high-quality wool jacketing. The pattern consists of parallel diagonal lines created by the interlacing of the warp and weft threads.[illegible]

DESIGN 1

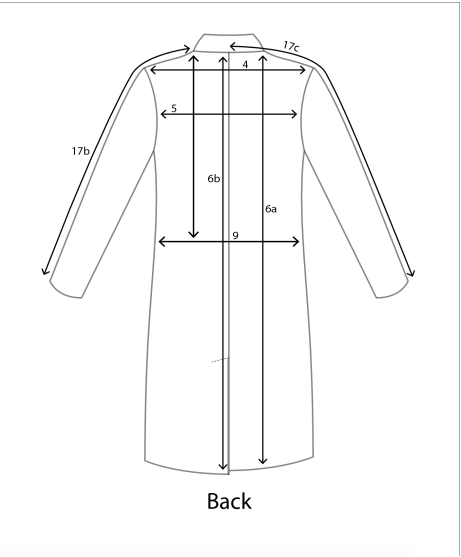
Style #: 003w2020 **Fabric:** Wool Twill

DATE: 5-May-20

FRONT



BACK



COMMENTS